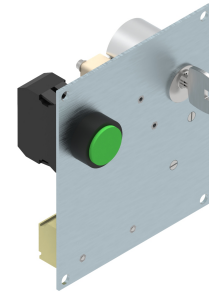


• **C30 TYPE**



Protection rate: **IP00**
 Insulation class: **B (130° C)**
 Standard voltage: **24-48-125Vdc and 230Vac**
 Power at 20°C: **8.5W**
 Duty cycle: **ED 100%**
 Weight: **0.6Kg**

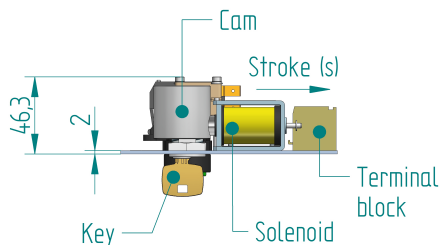
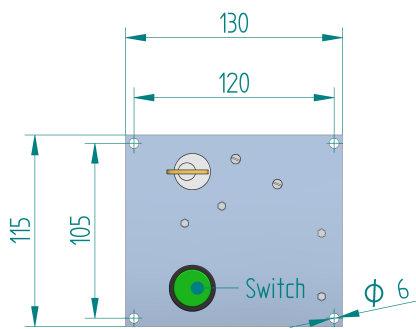
DESCRIPTION

This bolt is locked without voltage, the locking is made by an incorporated spring. With an electrical signal the bolt turns to unlocked.
 The key has two positions, in the locked position the key cannot be removed. To remove it, it is necessary to unlock the bolt.
 Microswitch number and its operation mode (normally open, closed or combined) depends on the application required.
 Applications: it is designed to protect properly from electrical accidents, it is assembled inside the front of the high, medium and low voltage electrical equipment and for all those applications where an electrical signal needs to be sent or turn off by a combined security activation (thumb switch/ key turn).

OPERATION MODE

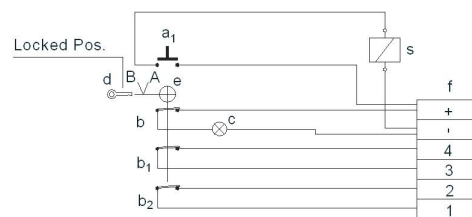
To operate any part of the line and for being sure that the electrical accident does not happen to people, the bolt must be unlocked.
 Push the (a1) thumb switch, at the same time turn the key 90° to (A), in this position the microswitches (b1-b2) are working and the line of actuation is cut, stop pushing the thumb switch and extract the key (d), this must be kept out of the electrical equipment, in the unlock position the lamp is switched off, it switches on when locking.
 To lock introduce the key and turn 90° to (B).

*Earthing is recommended if the metallic parts are accessible.



Disposition with 3 micros (NC)

ELECTRIC DIAGRAM



LAY OUT

- s=Solenoid
- a₁=Switch with lamp
- b=Microswitch (to keep lamp on when actionate the key)
- b₁-b₂=Microswitch available
- c=Lamp
- d=Bolt key to actionate the cam (e)
- e=Cam to actionate accionamiento micros (b-b₁-b₂)
- f=Terminal block

The bolt will be provided with two keys.

Ordering code: C30--V ED100%

Example: Voltage: 24Vdc: C30 24Vdc ED100%